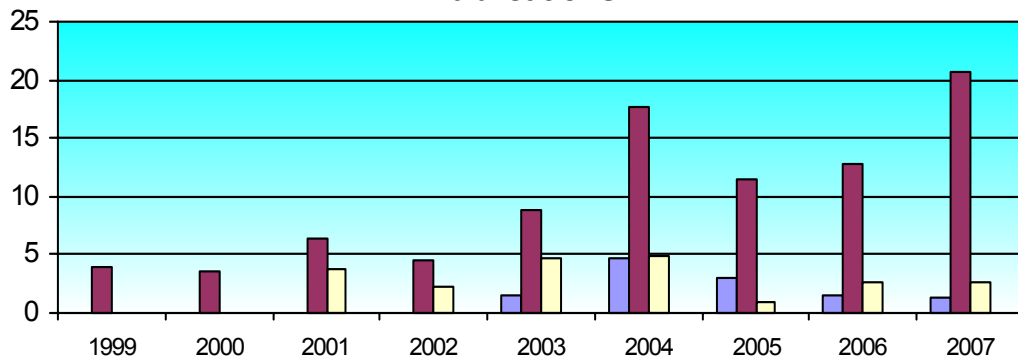


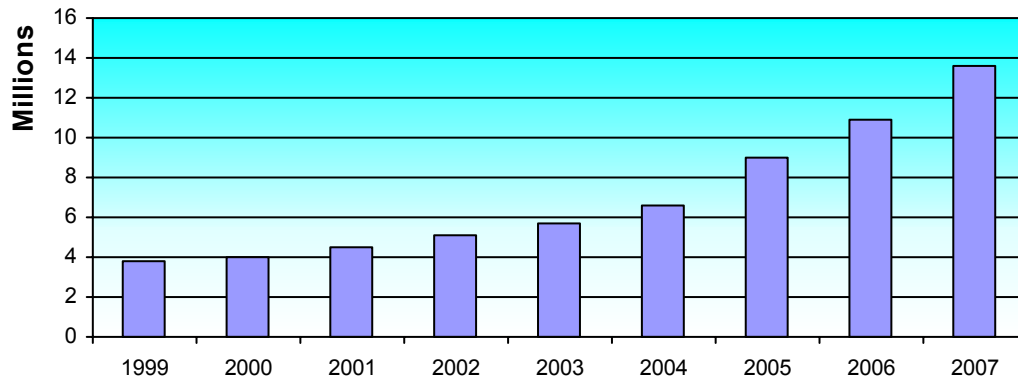
Tasmanian Institute of Agricultural Research

Publications



	Books		Chapters		Conferences		Journals		Total	
	points	#	points	#	points	#	points	#	points	#
2007			1.27	4	2.55	5	20.66	50	24.48	59
2006			1.5	2	2.57	14	12.82	45	16.89	61
2005			3	4	1	2	11.45	24	15.45	30
2004			4.75		4.83		17.71		27.29	0
2003			1.41	4	4.65	9	8.89	19	14.95	32
2002					2.25	4	4.6	12	6.85	16
2001					3.67	5	6.33	8	10	13
2000							3.6	7	3.6	7
1999							4	5	4	5

Research Income



	Australian Competitive Grants		Other Public Sector		Industry and Other		total	
	\$	#	\$	#	\$	#	\$	#
2007	5,636,075.18	87	7,353,525.18	23	598,749.00	28	13,588,349.36	138
2006	5,320,256.69	104	4,894,441.94	22	693,287.13	31	10,907,985.76	157
2005	5,453,689.00	75	3,389,144.00	17	201,996.00	17	9,044,829.00	109
2004	4,157,646.00	76	2,275,317.00	12	130,269.00	20	6,563,232.00	108
2003	3,349,798.00	69	2,304,946.00	9	94,680.00	10	5,749,424.00	88
2002	2,179,818.55	53	2,763,830.71	16	171,010.98	17	5,114,660.24	86
2001	1,789,051.37	50	2,481,152.60	10	245,330.94	18	4,515,534.91	78
2000	1,647,684.16		2,049,686.00		304,028.92		4,001,399.08	0
1999	1,543,778.00		2,022,256.00		261,623.00		3,827,657.00	0

Tasmanian Institute of Agricultural Research

completions				load		staff		
PhD		Masters						
High	Low	High	Low	High	Low	TR	RO	
						2007	2.00	37.70
						2006		32.25
						2005		30.15
						2004		30.05
						2003		31.65
						2002		27.10
						2001		20.80
						2000	1.00	16.30
						1999		