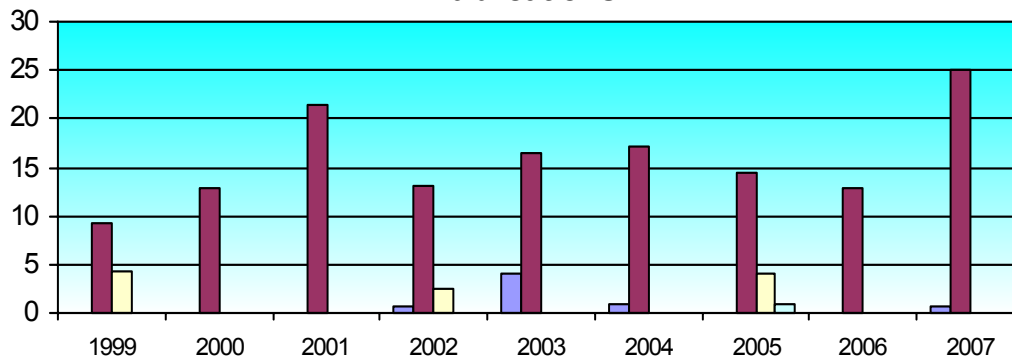


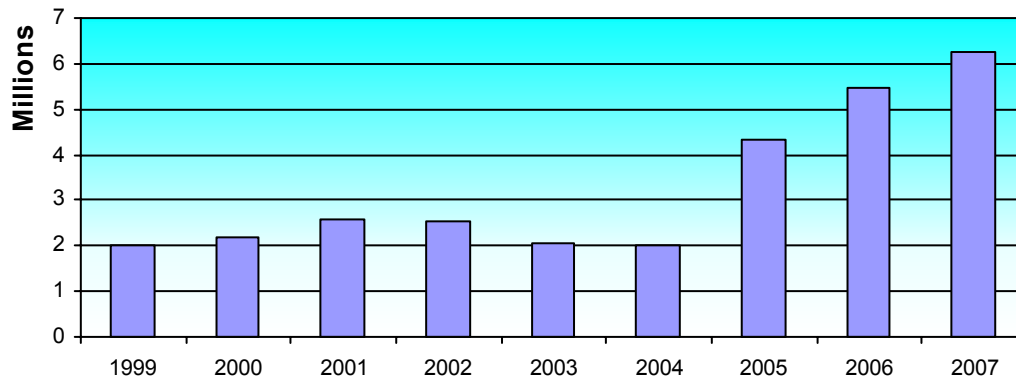
# Centre for Ore Deposit Research - CODES CoE

## Publications



Year	Books		Chapters		Conferences		Journals		Total	
	points	#	points	#	points	#	points	#	points	#
2007			0.67	1			25.1	54	25.77	55
2006							12.8	29	12.8	29
2005	1	1			4.01	6	14.34	32	19.35	39
2004		0	1	1			17.22	26	18.22	27
2003			4.16	9			16.38	28	20.54	37
2002			0.71	2	2.56	4	13.15	21	16.42	27
2001							21.49	39	21.49	39
2000							12.91	22	12.91	22
1999					4.33	5	9.17	16	13.5	21

## Research Income



Year	Australian Competitive Grants		Other Public Sector		Industry and Other		total	
	\$	#	\$	#	\$	#	\$	#
2007	3,847,969.72	8			2,427,213.61	16	6,275,183.33	24
2006	3,478,079.00	13	3,099.00	1	1,985,934.56	16	5,467,112.56	30
2005	2,934,044.00	8	200,000.00	0	1,184,010.00	10	4,318,054.00	18
2004	1,543,187.00	10	3,750.00	1	447,314.00	15	1,994,251.00	26
2003	1,365,910.00	10	147,600.00	2	563,328.00	11	2,076,838.00	23
2002	1,393,914.25	10	101,760.55	3	1,033,846.02	16	2,529,520.82	29
2001	1,516,520.50	16			1,042,978.50	20	2,559,499.00	36
2000	1,407,099.00				788,634.28		2,195,733.28	0
1999	1,583,782.00				425,693.00		2,009,475.00	0

---



---

## Centre for Ore Deposit Research - CODES CoE

---



---

	completions				load		staff		
	PhD		Masters		High	Low	TR	RO	
	High	Low	High	Low					
2007	4.00				2007	9.17	2007	3.50	17.99
2006	0.50				2006	24.15	2006	1.00	17.99
2005					2005	23.32	2005	4.00	13.75
2004	8.00		1.00		2004	28.92	2004	2.00	16.39
2003	6.00		1.00		2003	29.08	2003	3.00	14.85
2002	7.00		1.00		2002		2002	13.40	2.50
2001	8.00		1.00		2001	28.07	2001	2.00	9.45
2000	3.00		1.00		2000	30.50	2000	3.00	8.65
1999	3.00		1.00		1999		1999		