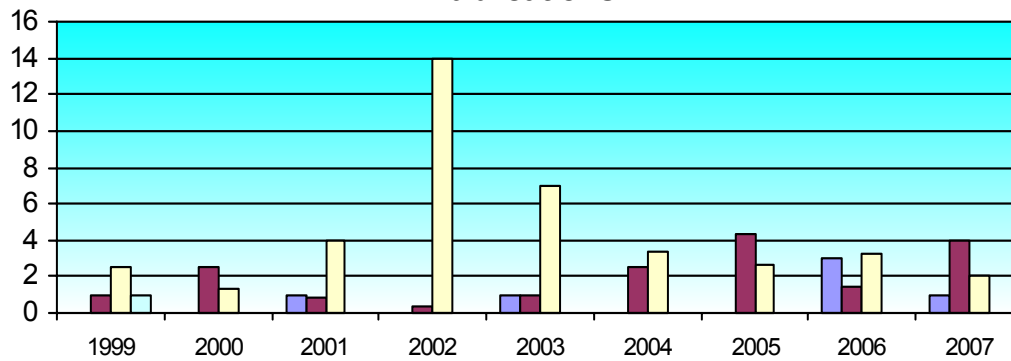


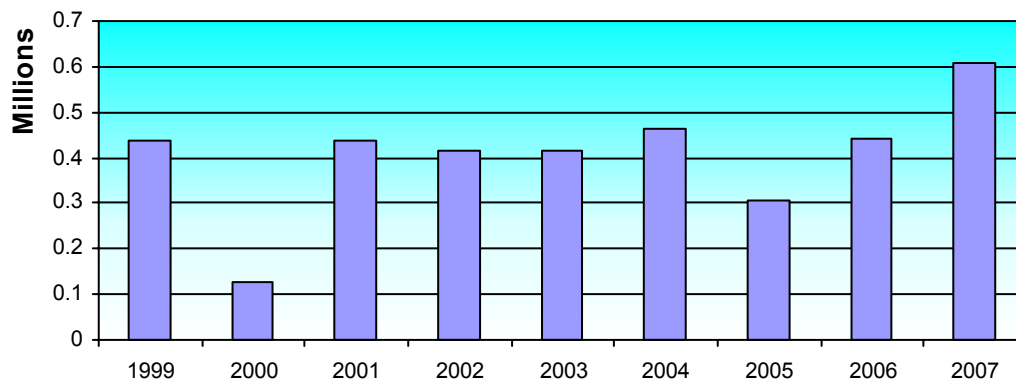
Architecture

Publications



	Books		Chapters		Conferences		Journals		Total	
	points	#	points	#	points	#	points	#	points	#
2007			1	1	2	2	4	4	7	7
2006			3	3	3.25	4	1.5	2	7.75	9
2005					2.67	3	4.33	5	7	8
2004					3.33	4	2.58	4	5.91	8
2003			1	1	7	7	1	1	9	9
2002					14	14	0.33	1	14.33	15
2001			1	1	4	4	0.83	3	5.83	8
2000					1.33	2	2.58	4	3.91	6
1999	1	1			2.5	3	1	1	4.5	5

Research Income



	Australian Competitive Grants		Other Public Sector		Industry and Other		total	
	\$	#	\$	#	\$	#	\$	#
2007	304,250.00	8	2,452.00	1	300,000.00	1	606,702.00	10
2006	259,900.00	4	39,686.48	3	142,950.00	1	442,536.48	8
2005	108,000.00	4			200,000.00	1	308,000.00	5
2004	234,500.00	7	10,000.00	1	220,000.00	2	464,500.00	10
2003	154,500.00	5	230,000.00	1	32,655.00	1	417,155.00	7
2002	195,000.00	3	219,113.63	2			414,113.63	5
2001	40,000.00	1	397,250.00	3	1,161.36	0	438,411.36	4
2000	-21,080.00				145,950.00		124,870.00	0
1999	21,080.00				417,500.00		438,580.00	0

Architecture

completions				load			staff		
PhD		Masters							
High	Low	High	Low	High	Low	TR	RO		
2007				2007	0.25	3.53	2007	13.50	1.00
2006		1.50		2006		3.33	2006	12.50	1.00
2005	0.75		1.00	2005		2.00	2005	12.50	
2004				2004		3.09	2004	11.10	1.40
2003			1.00	2003		3.63	2003	12.10	1.10
2002			1.00	2002	0.03	3.42	2002	10.60	1.25
2001			1.00	2001		4.38	2001	9.60	0.90
2000				2000		4.75	2000	10.20	1.90
1999				1999			1999		