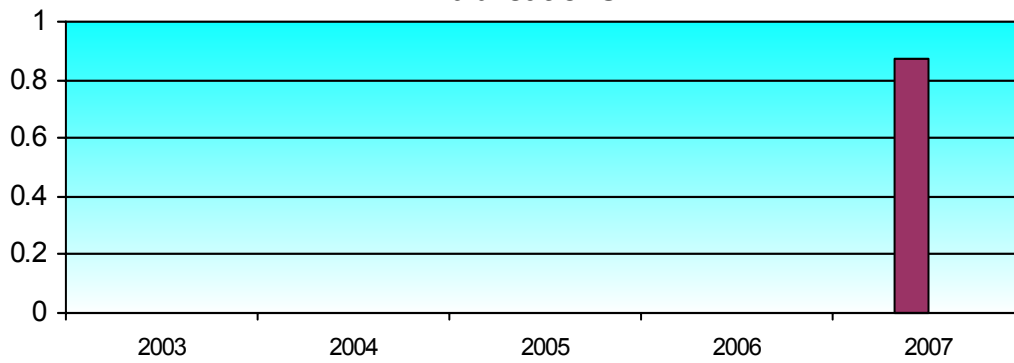


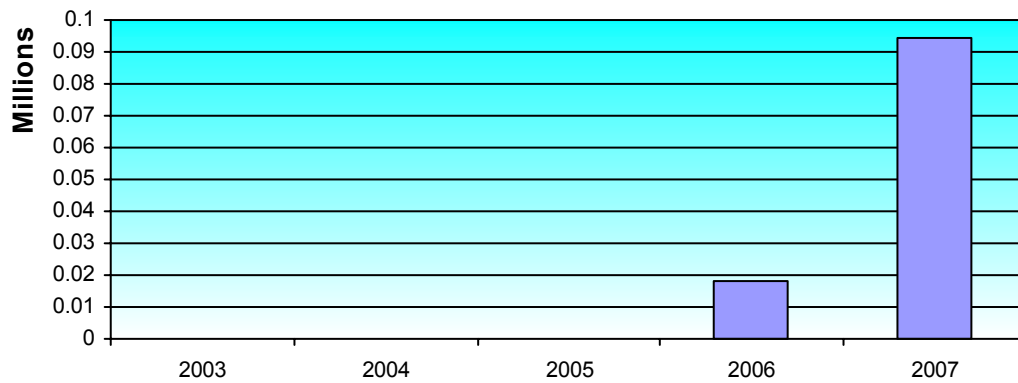
# North West Rural Clinical School

## Publications



	Books		Chapters		Conferences		Journals		Total	
	points	#	points	#	points	#	points	#	points	#
2007							0.87	2	0.87	2
2006									0	0
2005									0	0
2004									0	0
2003									0	0

## Research Income



	Australian Competitive Grants		Other Public Sector		Industry and Other		total	
	\$	#	\$	#	\$	#	\$	#
2007					94,439.44	1	94,439.44	1
2006					17,927.00		17,927.00	0
2005					0.00		0.00	0
2004					0.00		0.00	0
2003					0.00		0.00	0

	completions				load		staff		
	PhD		Masters		High Low		TR RO		
2007									
2006									
2005							3.95	0.54	
2004							5.45	1.13	
2003							3.85		